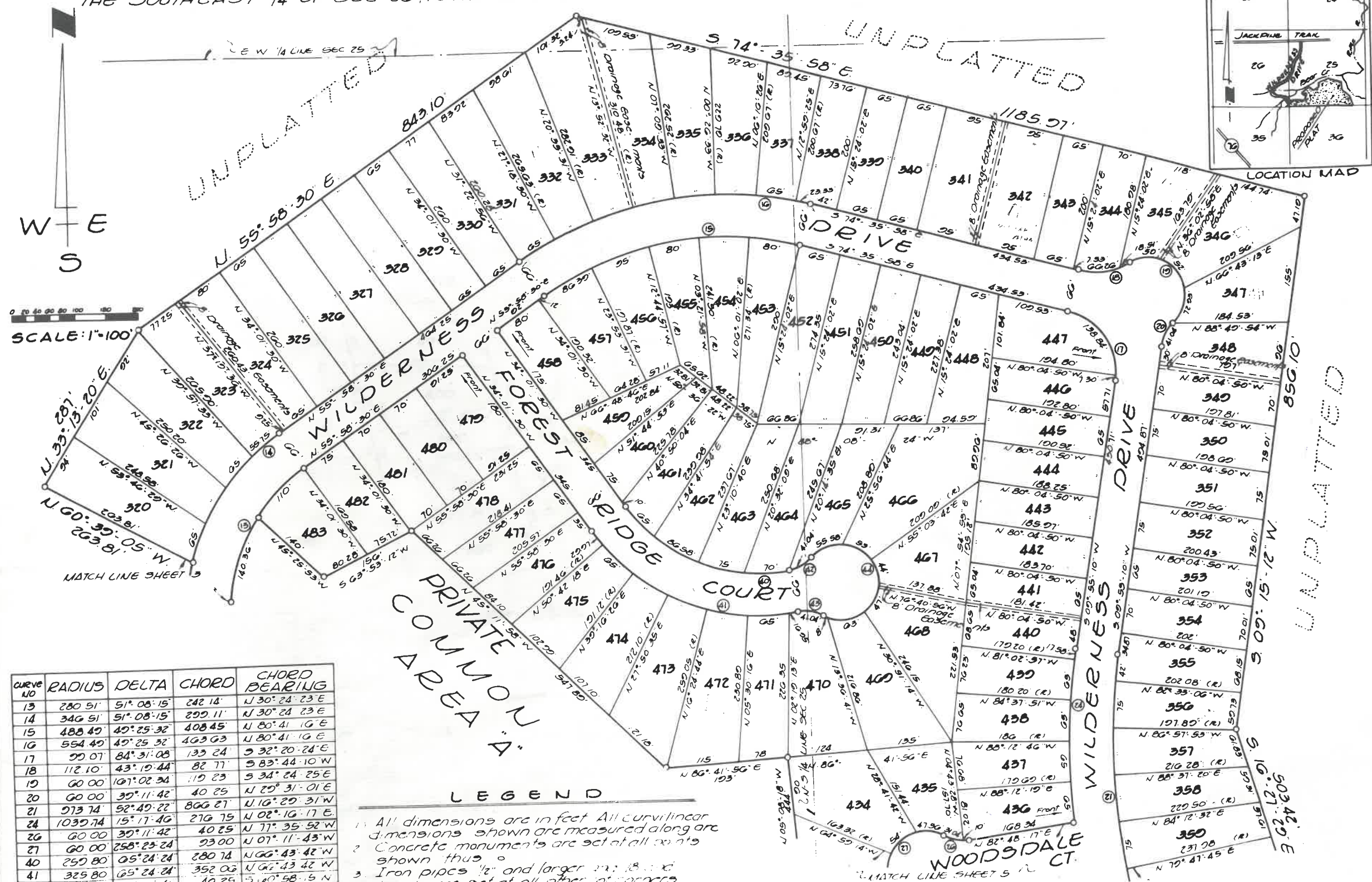


FOREST GROVE NO. 2

BEING A SUBDIVISION PART OF THE SOUTHEAST 1/4, THE SOUTHWEST 1/4 AND THE NORTHWEST 1/4 OF SEC 25 AND THE SOUTHEAST 1/4 OF SEC 26, TOWN 20 NORTH, RANGE 3 EAST, MOFFATT TOWNSHIP, AREAC COUNTY, MICHIGAN



CURVE NO	RADIUS	DELTA	CHORD	CHORD BEARING
13	280.51'	51° 08' 15"	242.14'	N 30° 24' 23" E
14	346.51'	51° 08' 15"	299.11'	N 30° 24' 23" E
15	488.49'	45° 25' 32"	408.45'	N 80° 41' 16" E
16	554.49'	45° 25' 32"	463.63'	N 80° 41' 16" E
17	99.07'	84° 31' 08"	133.24'	S 32° 20' 24" E
18	112.10'	43° 19' 44"	82.77'	S 83° 44' 10" W
19	60.00'	107° 02' 34"	119.23'	S 34° 24' 25" E
20	60.00'	39° 11' 42"	40.25'	N 29° 31' 01" E
21	973.74'	52° 49' 22"	806.27'	N 16° 29' 31" W
24	1039.74'	15° 17' 46"	276.75'	N 02° 16' 17" E
26	60.00'	39° 11' 42"	40.25'	N 77° 35' 52" W
27	60.00'	258° 23' 24"	93.00'	N 07° 11' 43" W
40	259.80'	65° 24' 24"	280.74'	N 66° 43' 42" W
41	325.80'	65° 24' 24"	352.06'	N 66° 43' 42" W
42	60.00'	39° 11' 41"	40.25'	S 80° 58' 15" N
43	60.00'	39° 11' 41"	40.25'	S 79° 50' 03" E
44	60.00'	358° 23' 37"	93.00'	S 09° 25' 54" E

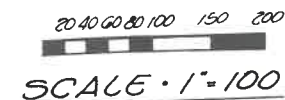
- LEGEND**
- All dimensions are in feet. All curvilinear dimensions shown are measured along arc.
 - Concrete monuments are set at all points shown thus:
 - Iron pipes 1/2" and larger are set at all other corners.
 - The bearings shown on this plat are in relation to recorded FOREST GROVE as recorded in Liber 4 of Plat in pages 6-14.

FOREST GROVE

BEING A SUBDIVISION PART OF THE WEST HALF OF SECTION 25 AND THE EAST HALF OF THE SOUTHEAST QUARTER OF SECTION 26, TOWN 20 NORTH, RANGE 3 EAST, MOFFATT TOWNSHIP, ARENAC COUNTY, MICHIGAN.



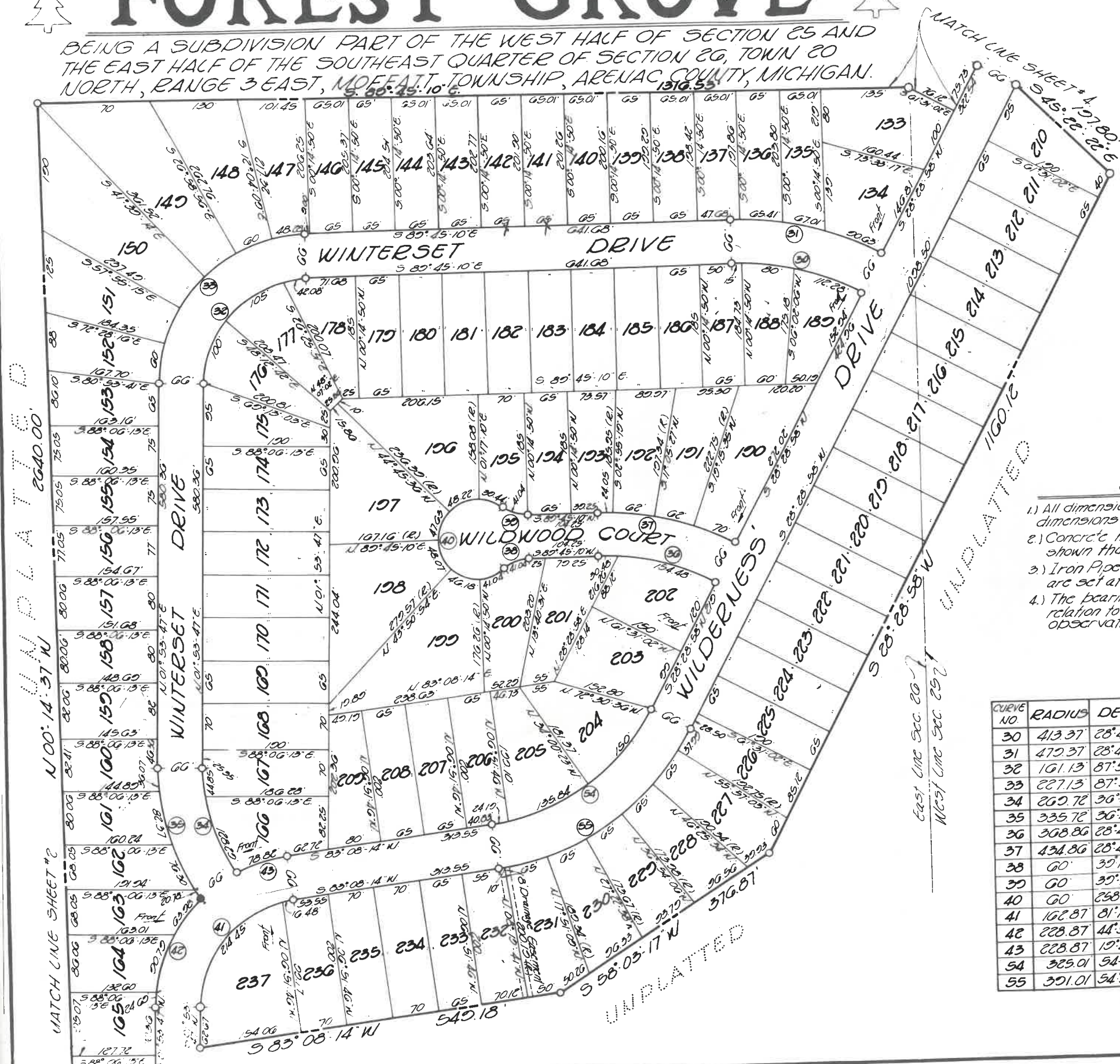
LOCATION SKETCH



LEGEND

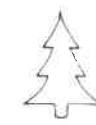
- 1.) All dimensions are in feet. All curvilinear dimensions shown are measured along arc.
- 2.) Concrete monuments are set at all points shown thus: .
- 3.) Iron Pipes 1/2" and larger and 18" and longer are set at all other lot corners.
- 4.) The bearings shown on this plat are in relation to the true meridian by celestial observation.

CURVE NO.	RADIUS	DELTA	CHORD	CHORD BEARING
30	413.37	28°43'48"	205.11	S 75°52'56" E
31	479.37	28°43'48"	237.86	S 75°52'56" E
32	101.13	87°51'23"	223.57	N 45°49'29" E
33	227.13	87°51'23"	315.15	N 45°49'29" E
34	269.72	36°46'53"	170.12	N 16°29'39" W
35	335.72	36°46'53"	211.83	N 16°29'39" W
36	308.86	28°45'48"	153.03	S 75°52'56" E
37	434.86	28°45'48"	215.78	S 75°52'56" E
38	60	39°11'42"	40.25	N 70°09'19" E
39	60	39°11'42"	40.25	N 70°38'59" W
40	60	258°23'24"	25	N 00°14'50" W
41	162.87	81°14'47"	212.07	N 42°31'01" E
42	228.87	44°55'42"	174.50	N 24°21'38" E
43	228.87	19°45'55"	78.43	N 73°16'17" E
54	325.01	54°39'16"	228.41	S 55°48'35" W
55	391.01	54°39'16"	359.01	S 55°48'36" W

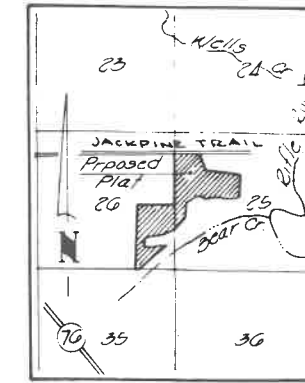




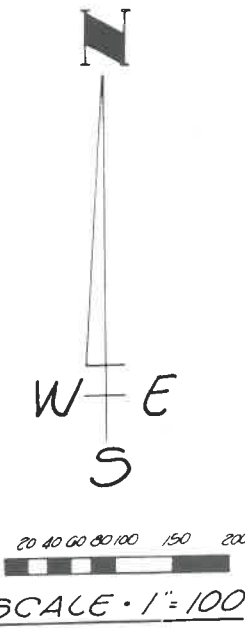
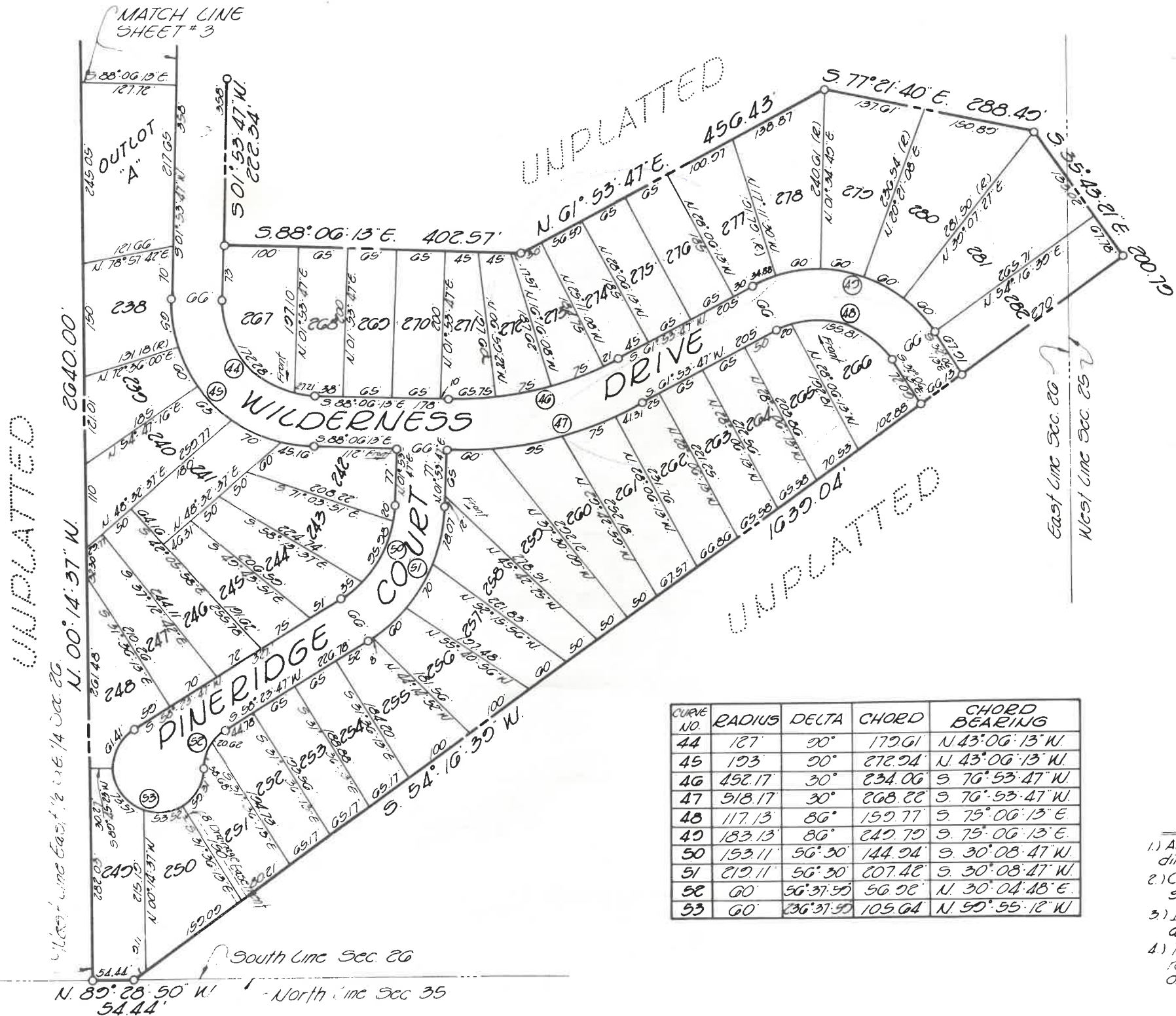
FOREST GROVE



BEING A SUBDIVISION PART OF THE WEST HALF OF SECTION 25 AND THE EAST HALF OF THE SOUTHEAST QUARTER OF SECTION 26, TOWN 20 NORTH, RANGE 3 EAST, MOFFATT TOWNSHIP, ARENAC COUNTY, MICHIGAN.



LOCATION SKETCH



CURVE NO.	RADIUS	DELTA	CHORD	CHORD BEARING
44	187	90°	179.61	N 43° 06' 13" W.
45	193	90°	272.94	N 43° 06' 13" W.
46	452.17	30°	234.06	S 70° 53' 47" W.
47	518.17	30°	268.22	S 70° 53' 47" W.
48	117.13	86°	159.77	S 75° 06' 13" E.
49	183.13	86°	249.79	S 75° 06' 13" E.
50	153.11	56° 30'	144.24	S 30° 08' 47" W.
51	219.11	56° 30'	207.42	S 30° 08' 47" W.
52	60	56° 37' 59"	56.92	N 30° 04' 48" E.
53	60	56° 37' 59"	105.64	N 59° 55' 12" W.

LEGEND

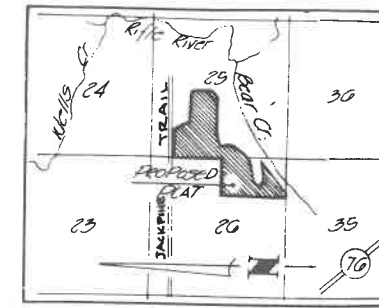
- 1) All dimensions are in feet. All curvilinear dimensions shown are measured along arc.
- 2) Concrete monuments are set at all points shown thus: ○
- 3) Iron Pipes 1/2" and larger and 18" and larger are set at all other lot corners.
- 4) The bearings shown on this plat are in relation to the true meridian by magnetic observation.



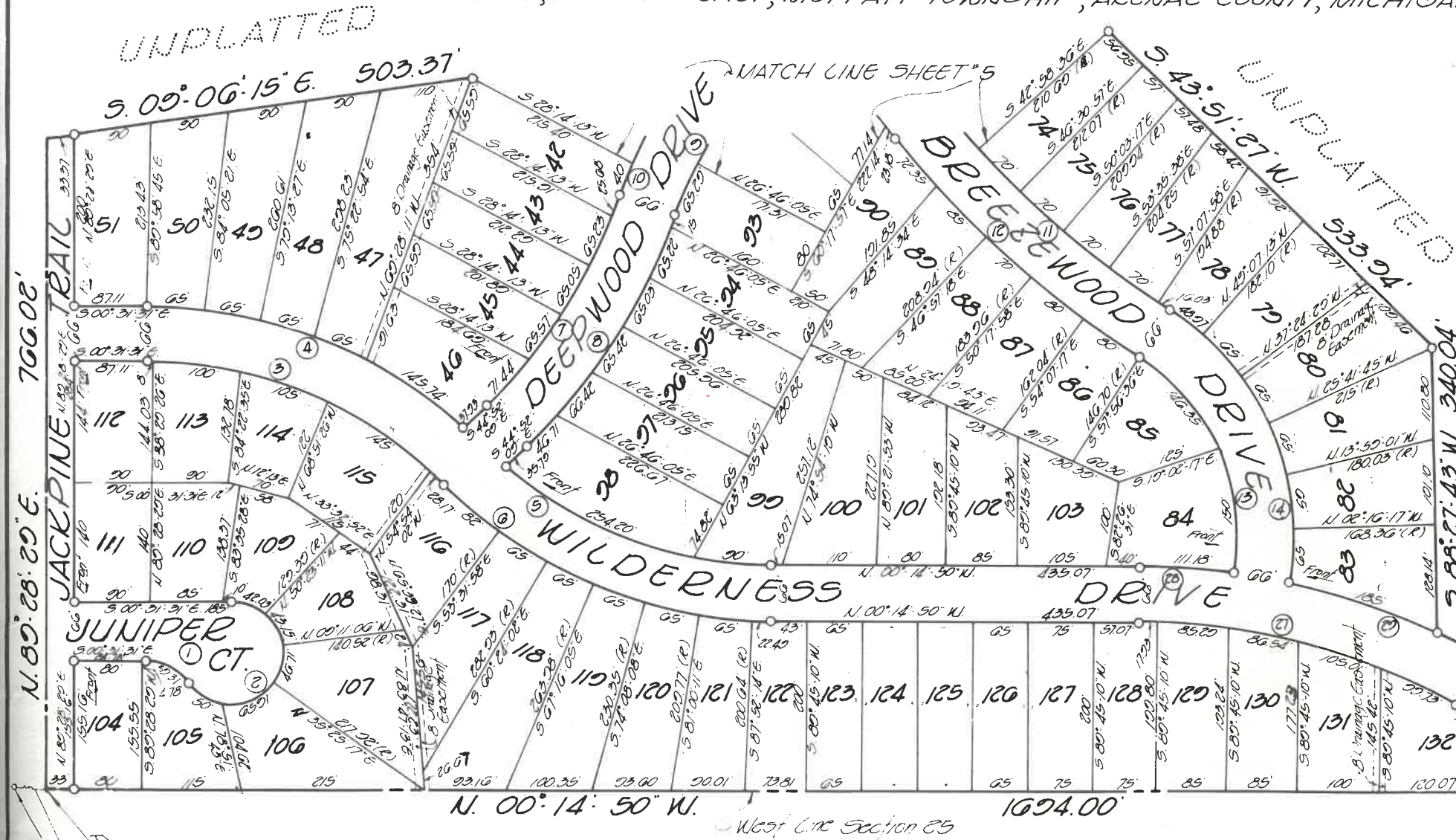
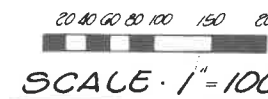
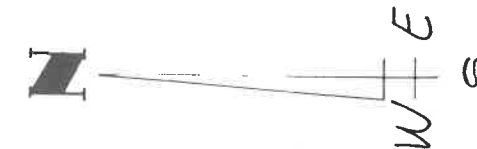
FOREST GROVE #1



BEING A SUBDIVISION PART OF THE WEST HALF OF SECTION 25 AND THE EAST HALF OF THE SOUTHEAST QUARTER OF SECTION 26, TOWN 20 NORTH, RANGE 3 EAST, MOFFATT TOWNSHIP, ARENAC COUNTY, MICHIGAN



LOCATION SKETCH



UNPLATTED

UNPLATTED

CERTIFICATE OF COUNTY DRAIN COMMISSIONERS

Approved on Mar. 10, 1990 as complying with Section 192 of Act 288, P.A. 1967 and the applicable rule and regulations published by this office in the County of ARENAC

Charles Dittenber
Charles Dittenber Member

Michael Pavelka
Michael Pavelka Member

Ross A Perrin
Ross A Perrin Chairman

LEGEND

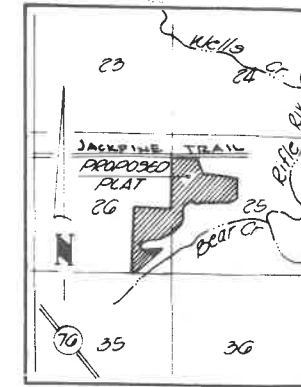
- All dimensions are in feet. All curvilinear dimensions shown are measured along arc
- Concrete monuments are set at all points shown thus:
- Iron Pipes 1/2" and larger and 18" and larger are set at other 10' corners
- The bearings shown on the plat are in relation to the true meridian by celestial observation

CURVE NO.	RADIUS	DELTA	CHORD	CHORD BEARING
1	60	56°31'59"	96.02'	S 21°47'29" W
2	60	236°31'50"	105.62'	N 66°18'31" W
3	484.62	45°30'00"	376.03'	S 22°18'10" W
4	550.62	32°13'12"	376.62'	S 20°35'05" W
5	476.29	41°24'13"	326.76'	N 20°27'12" E
6	542.29	45°22'41"	418.36'	N 22°26'30" E
7	627.13	26°45'58"	290.31'	N 58°15'08" W
8	693.13	26°45'58"	320.86'	N 58°15'08" W
9	486.73	32°11'51"	267.23'	S 55°32'11" E
10	552.73	32°11'51"	306.54'	S 55°32'11" E
11	1133.27	18°30'21"	364.44'	N 41°5'34" E
12	1133.27	18°30'21"	365.67'	N 41°5'34" E
13	291.38	67°23'03"	270.50'	S 23°44'55" W
14	317.28	67°23'03"	292.78'	S 23°44'55" W
27	786.76	23°43'48"	376.30'	S 12°27'14" W
28	852.76	7°28'00"	711.10'	S 02°20'00" W
29	852.76	16°42'26"	220.51'	S 22°27'14" W

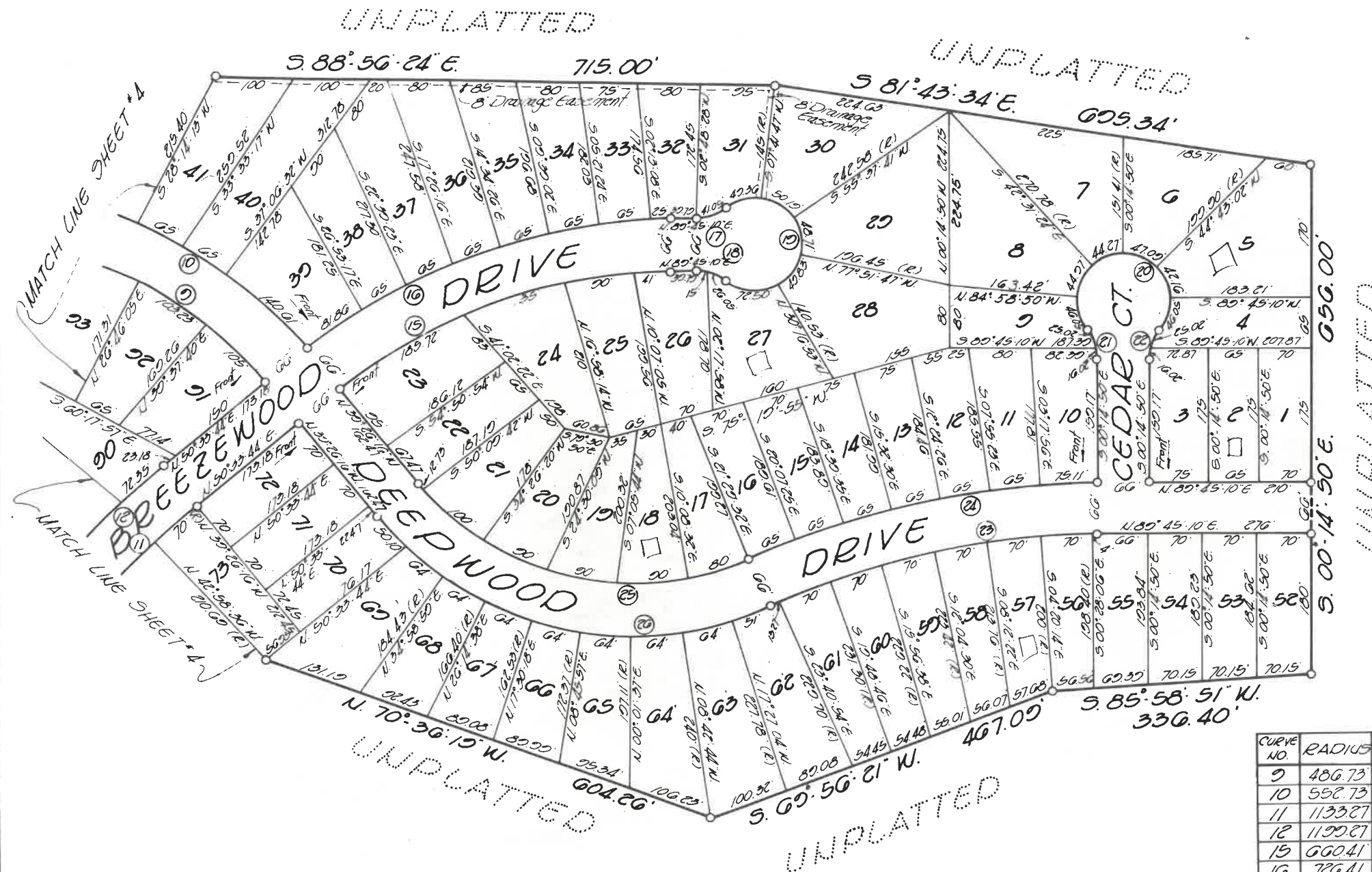
POINT OF BEGINNING
S 20°14'50" E
546 TO THE NW COR OF SEC 25, T 20N, R 3E

FOREST GROVE

BEING A SUBDIVISION PART OF THE WEST HALF OF SECTION 25 AND THE EAST HALF OF THE SOUTHEAST QUARTER OF SECTION 26, TOWN 20 NORTH, RANGE 3 EAST, MOFFATT TOWNSHIP, ARENAC COUNTY, MICHIGAN.



LOCATION SKETCH



SCALE 1" = 100'

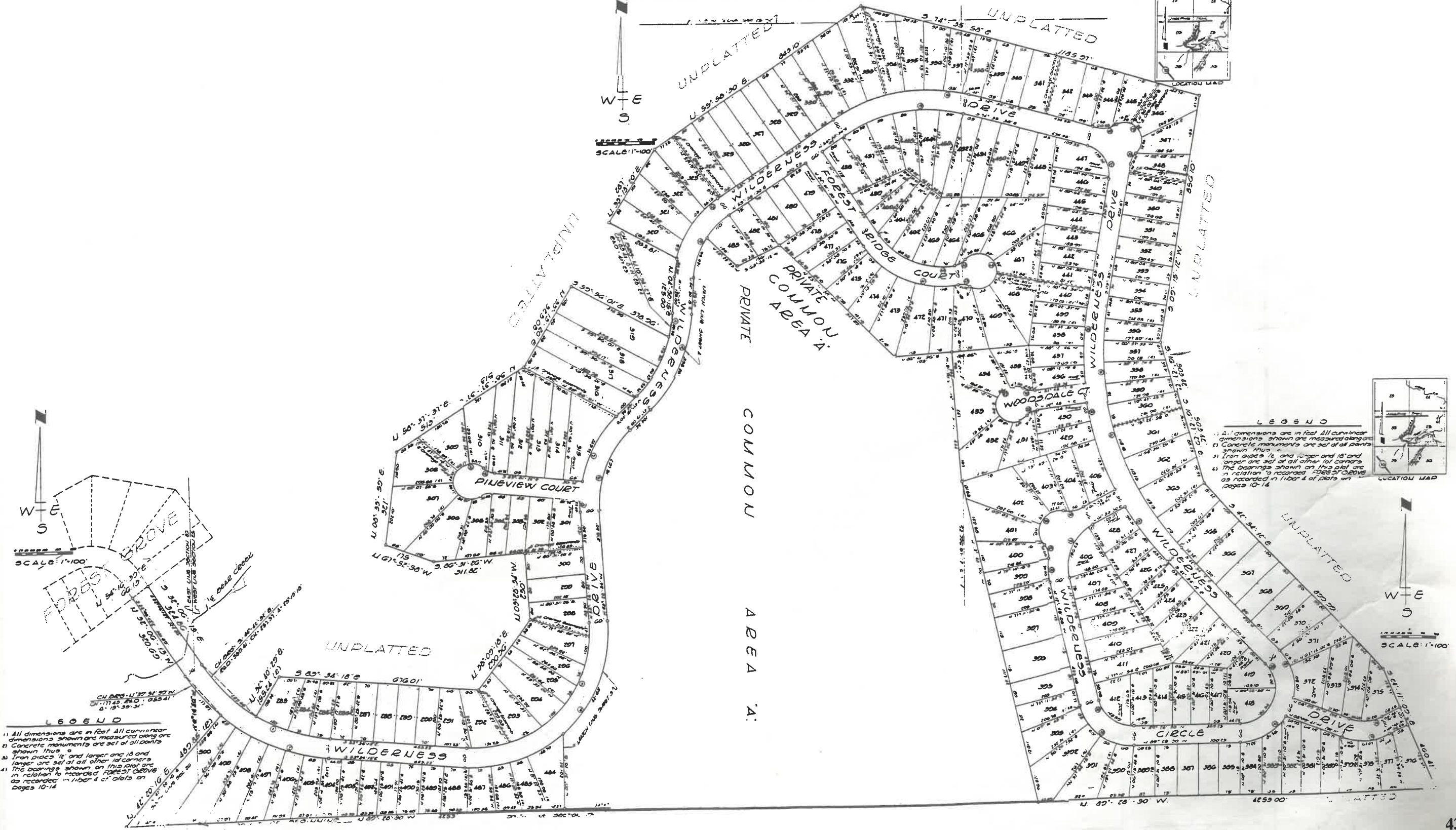
CURVE NO.	RADIUS	DELTA	CHORD	CHORD BEARING
9	486.73	38°11'51"	269.23	S 55°38'11" E.
10	552.73	38°11'51"	306.54	S 55°38'11" E.
11	1133.27	18°30'21"	364.44	N 41°18'34" E.
12	1133.27	18°30'21"	385.67	N 41°18'34" E.
13	660.41	35°11'26"	442.96	N 70°09'27" E.
16	786.41	35°11'26"	487.23	N 70°09'27" E.
17	60	30°11'41"	40.25	S 70°09'10" W.
18	60	30°11'41"	40.25	S 70°38'50" E.
19	60	258°23'23"	23	S 00°14'50" E.
20	60	158°23'24"	23	N 89°45'10" E.
21	60	30°11'42"	40.25	S 70°50'41" E.
22	60	30°11'42"	40.25	N 10°21'21" E.
23	1030.65	24°10'05"	434.04	N 77°40'08" E.
24	1102.65	24°10'05"	461.67	N 77°40'08" E.
25	353.60	74°58'30"	430.41	N 76°55'35" W.
26	412.60	74°58'30"	510.75	N 76°55'35" W.

LEGEND

- 1) All dimensions are in feet. All curvilinear dimensions shown are measured along arc.
- 2) Concrete monuments are set at all points shown thus: 0.
- 3) Iron Pipes 1/2" and larger and 1 1/2" and larger are set at all other lot corners.
- 4) The bearings shown on this plat are in relation to the true meridian by celestial observation.

FOREST GROVE NO. 2

BEING A SUBDIVISION PART OF THE SOUTHEAST 1/4 THE SOUTHWEST 1/4 AND THE NORTHWEST 1/4 OF SEC 25 AND THE SOUTHEAST 1/4 OF SEC 26 TOWNSHIP 20 NORTH, RANGE 3 EAST, HOFFMAN TOWNSHIP, DESELUX COUNTY, ILLINOIS



LEGEND

- All dimensions are in feet. All curvilinear dimensions shown are measured along arc.
- Concrete monuments are set at all points shown thus:
- Iron pipes 1/2 and larger and 1/2 and larger are set at all other lot corners.
- The bearings shown on this plat are in relation to meridian FOREST GROVE as recorded in 1122 & of plats on pages 10-14.

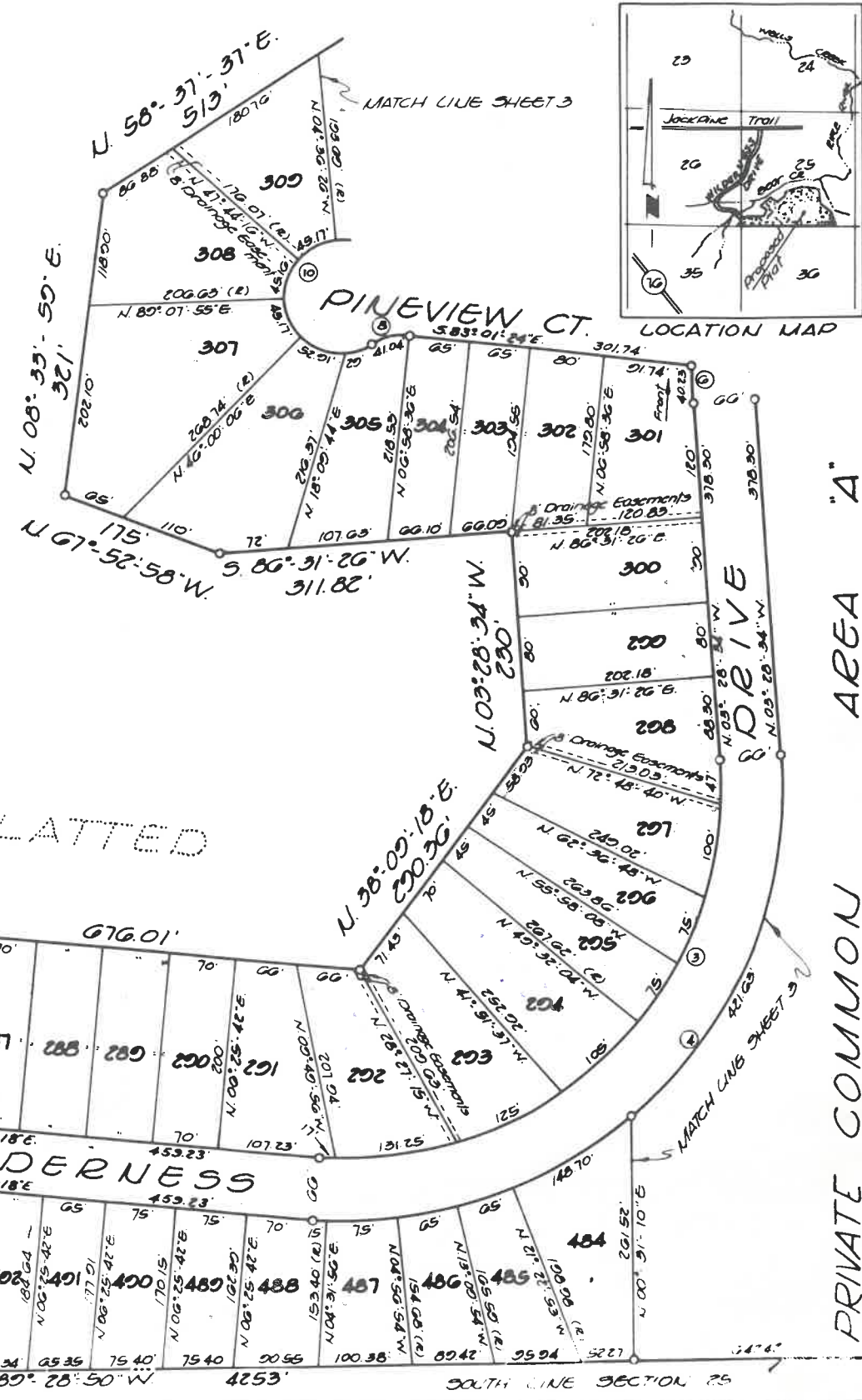
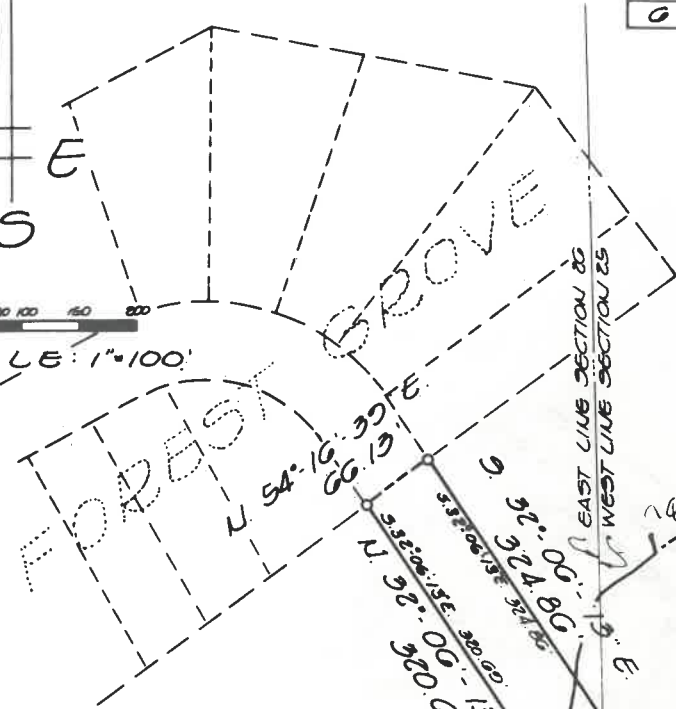
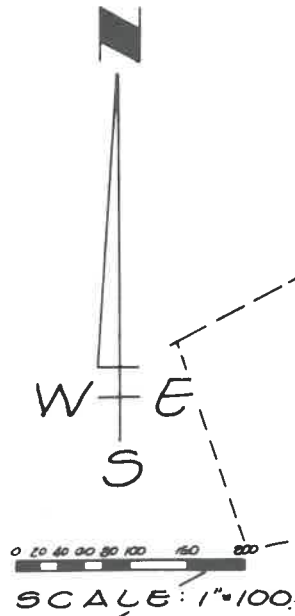
LEGEND

- All dimensions are in feet. All curvilinear dimensions shown are measured along arc.
- Concrete monuments are set at all points shown thus:
- Iron pipes 1/2 and larger and 1/2 and larger are set at all other lot corners.
- The bearings shown on this plat are in relation to meridian FOREST GROVE as recorded in 1122 & of plats on pages 10-14.

FOREST GROVE NO. 2

BEING A SUBDIVISION PART OF THE SOUTHEAST 1/4, THE SOUTHWEST 1/4 AND THE NORTHWEST 1/4 OF SEC. 25 AND THE SOUTHEAST 1/4 OF SEC. 26, TOWN 20 NORTH, RANGE 3 EAST, MOFFATT TOWNSHIP, ARENAC COUNTY, MICHIGAN

CURVE NO.	RADIUS	DELTA	CHORD	CHORD BEARING
1	569.41'	51° 28' 05"	911.84'	N 57° 50' 16" W
2	655.41'	51° 28' 05"	500.15'	N 57° 50' 16" W
3	387.26'	90° 54' 16"	592.00'	S 46° 28' 34" W
4	453.26'	90° 54' 16"	623.25'	S 46° 28' 34" W
8	60.00'	90° 11' 42"	40.25'	N 77° 22' 45" E
10	60.00'	258° 23' 24"	93.00'	N 06° 58' 36" E
6	401.50'	05° 44' 22"	40.21'	N 00° 36' 24" W

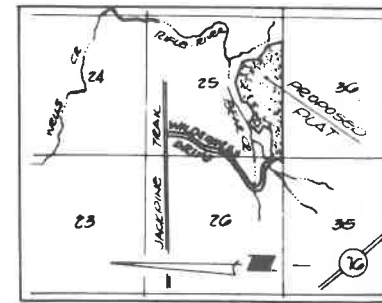


LEGEND

- 1) All dimensions are in feet. All curvilinear dimensions shown are measured along arc.
- 2) Concrete monuments are set at all points shown thus:
- 3) Iron pipes 1/2" and larger and 18" and longer are set at all other lot corners.
- 4) The bearings shown on this plat are in relation to recorded FOREST GROVE as recorded in liber 4 of plats on pages 10-14.

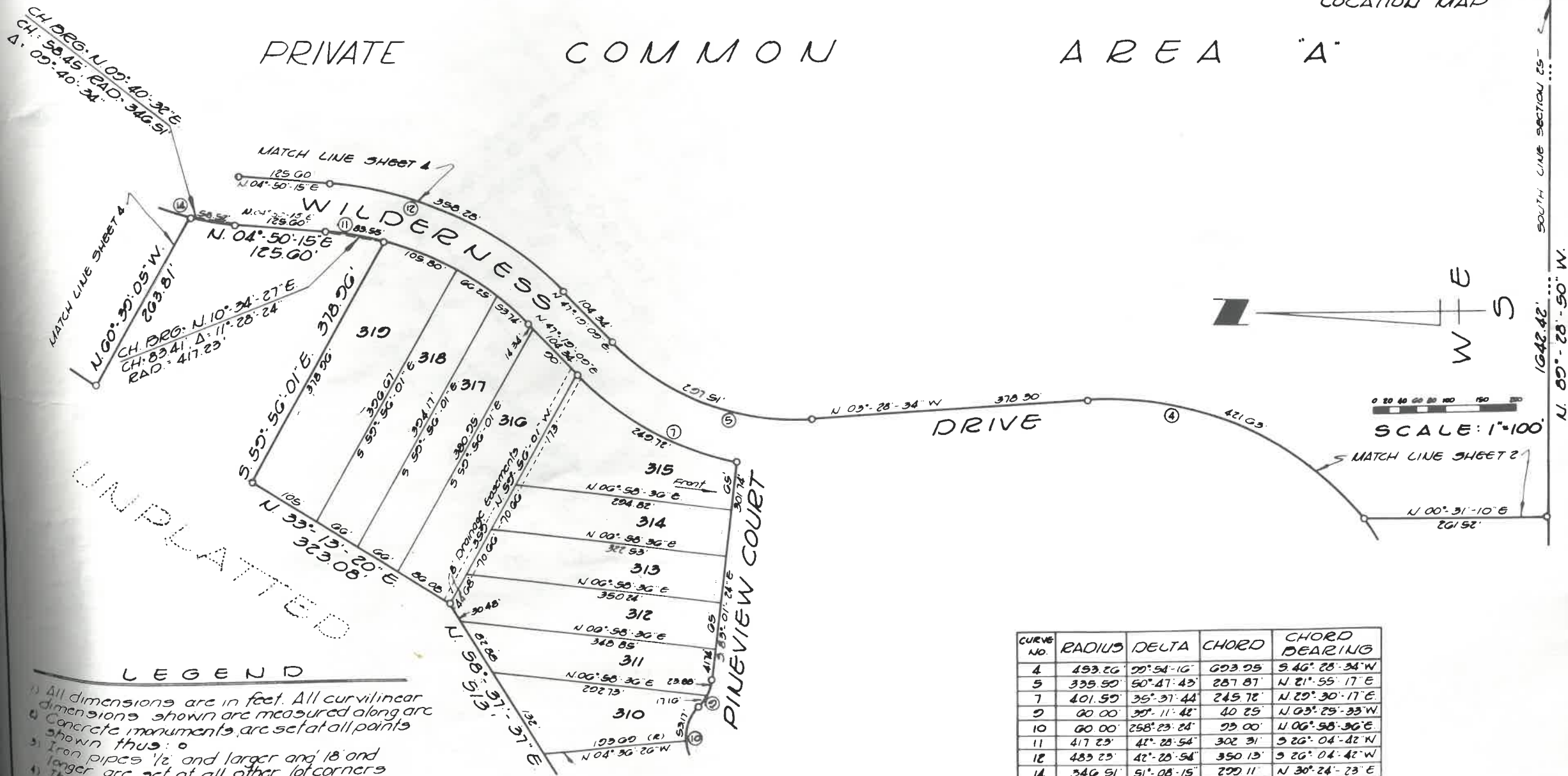
FOREST GROVE NO. 2

BEING A SUBDIVISION PART OF THE SOUTHEAST 1/4, THE SOUTHWEST 1/4 AND THE NORTHWEST 1/4 OF SEC 25 AND THE SOUTHEAST 1/4 OF SEC 26 TOWN 20 NORTH, RANGE 3 EAST, MOFFATT TOWNSHIP, ARENAC COUNTY, MICHIGAN.



LOCATION MAP

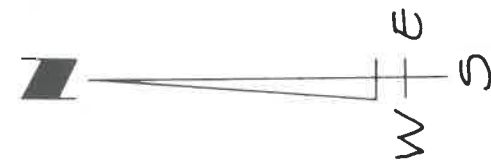
PRIVATE COMMON AREA "A"



UNPLATTED

LEGEND

- All dimensions are in feet. All curvilinear dimensions shown are measured along arc.
- Concrete monuments are set at all points shown thus:
- Iron pipes 1/2 and larger and 18 and longer are set at all other lot corners.
- The bearings shown on this plat are in relation to recorded FOREST GROVE NO. 2 recorded in liber 4 of plats on pages 10-14.



SCALE: 1"=100'

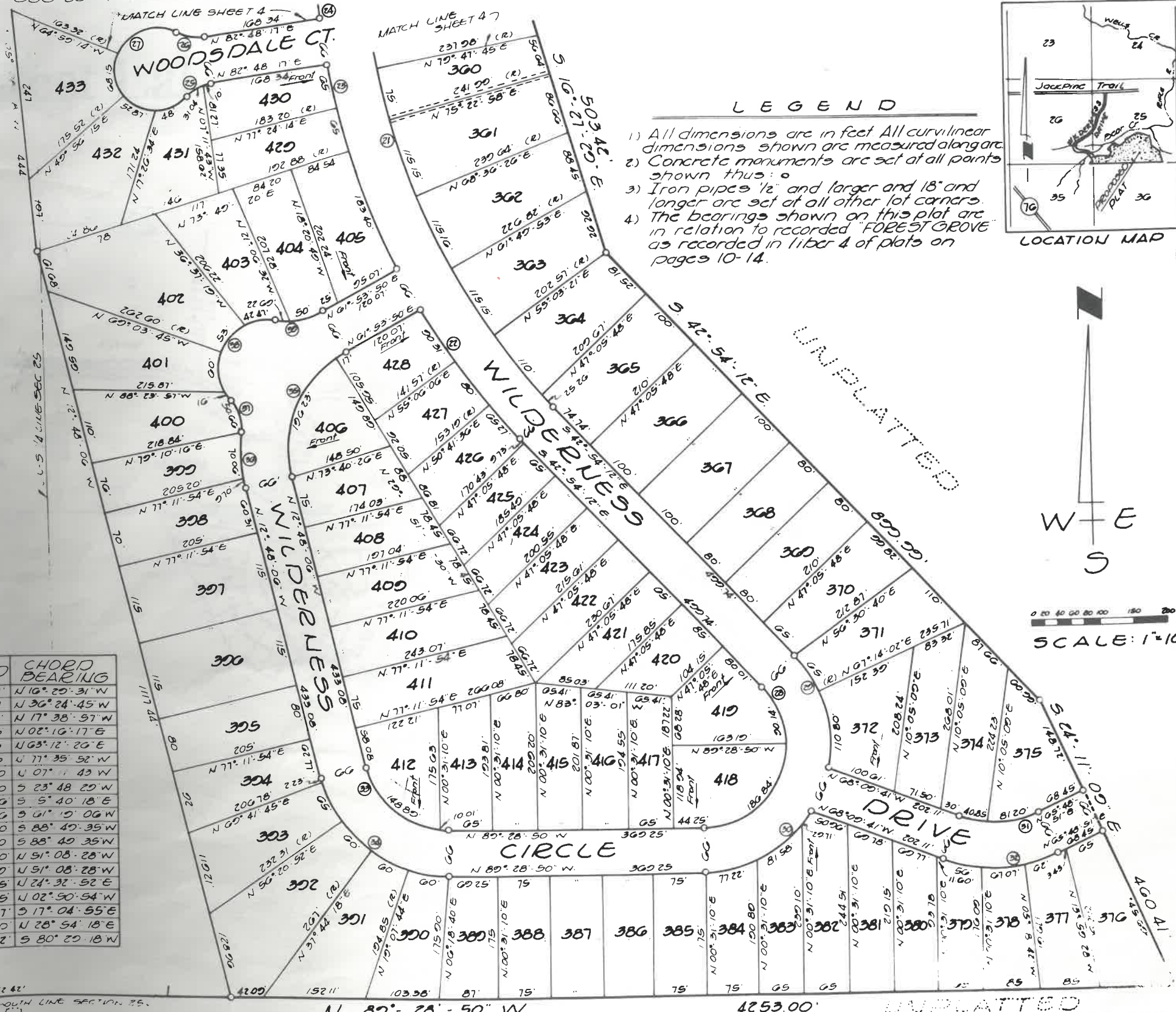
CURVE NO.	RADIUS	DELTA	CHORD	CHORD BEARING
4	493.26	77° 54' 16"	623.95	S 46° 28' 34" W
5	335.50	50° 47' 43"	287.87	N 21° 55' 17" E
7	401.57	35° 31' 44"	245.78	N 29° 30' 17" E
9	60.00	39° 11' 42"	40.25	N 03° 29' 33" W
10	60.00	258° 23' 24"	95.00	N 06° 58' 36" E
11	417.23	41° 28' 54"	302.31	S 26° 04' 42" W
12	483.25	42° 28' 54"	350.13	S 26° 04' 42" W
14	346.91	51° 08' 15"	299.11	N 30° 24' 23" E

FOREST GROVE NO. 2

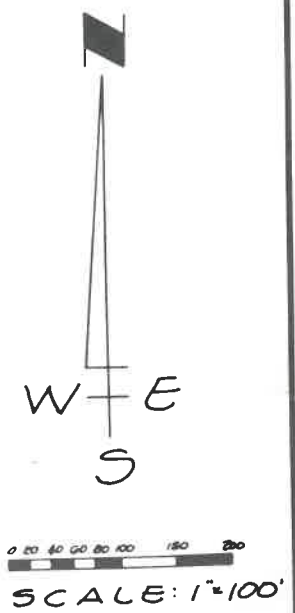
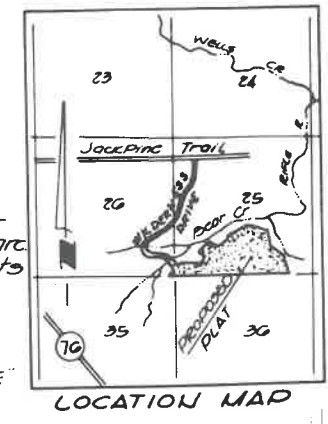
BEING A SUBDIVISION PART OF THE SOUTHEAST 1/4, THE SOUTHWEST 1/4 AND THE NORTHWEST 1/4 OF SEC. 25 AND THE SOUTHEAST 1/4 OF SEC. 26 TOWN 20 NORTH, RANGE 3 EAST, MOFFATT TOWNSHIP, ARENAC COUNTY MICHIGAN

PRIVATE COMMON AREA "A"

CURVE NO	RADIUS	DELTA	CHORD	CHORD BEARING
21	573.74	52° 40' 22"	806.27	N 16° 29' 31" W
22	1032.74	12° 58' 54"	235.07	N 36° 24' 45" W
23	1032.74	17° 16' 12"	312.21	N 17° 38' 57" W
24	1032.74	15° 17' 46"	276.75	N 02° 16' 17" E
25	60.00	30° 11' 42"	40.25	N 77° 35' 52" W
26	60.00	30° 11' 42"	40.25	N 77° 35' 52" W
27	60.00	258° 23' 24"	93.00	N 07° 11' 43" W
28	18.94	133° 25' 22"	218.90	S 23° 48' 20" W
29	184.94	54° 27' 38"	160.26	S 5° 40' 18" E
30	184.94	58° 24' 08"	180.46	S 61° 10' 06" W
31	151.94	46° 01' 28"	118.80	S 88° 40' 35" W
32	217.94	46° 01' 28"	170.40	S 88° 40' 35" W
33	118.73	76° 40' 44"	47.30	N 51° 08' 28" W
34	184.73	76° 40' 44"	220.10	N 51° 08' 28" W
35	163.55	74° 41' 55"	108.45	N 24° 32' 52" E
36	220.55	74° 41' 55"	170.35	N 02° 50' 54" W
37	60.00	48° 22' 28"	40.17	S 17° 04' 55" E
38	70.00	140° 20' 55"	131.70	N 28° 54' 18" E
39	12.01	37° 10' 56"	71.42	S 80° 20' 18" W



- LEGEND**
- 1) All dimensions are in feet All curvilinear dimensions shown are measured along arc
 - 2) Concrete monuments are set at all points shown thus:
 - 3) Iron pipes 1/2" and larger and 18" and larger are set at all other lot corners.
 - 4) The bearings shown on this plat are in relation to recorded FOREST GROVE as recorded in Liber 4 of plats on pages 10-14.



UNPLATTED

N. 80° 28' 50" W.

4253.00'

UNPLATTED